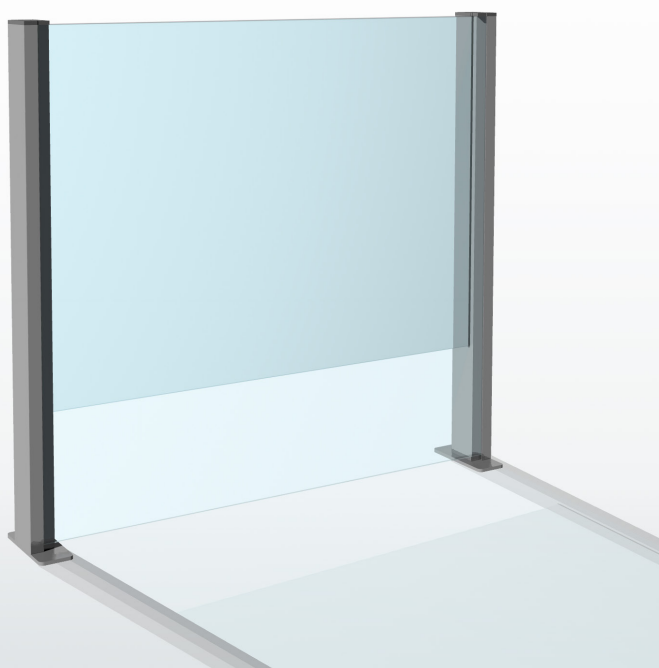


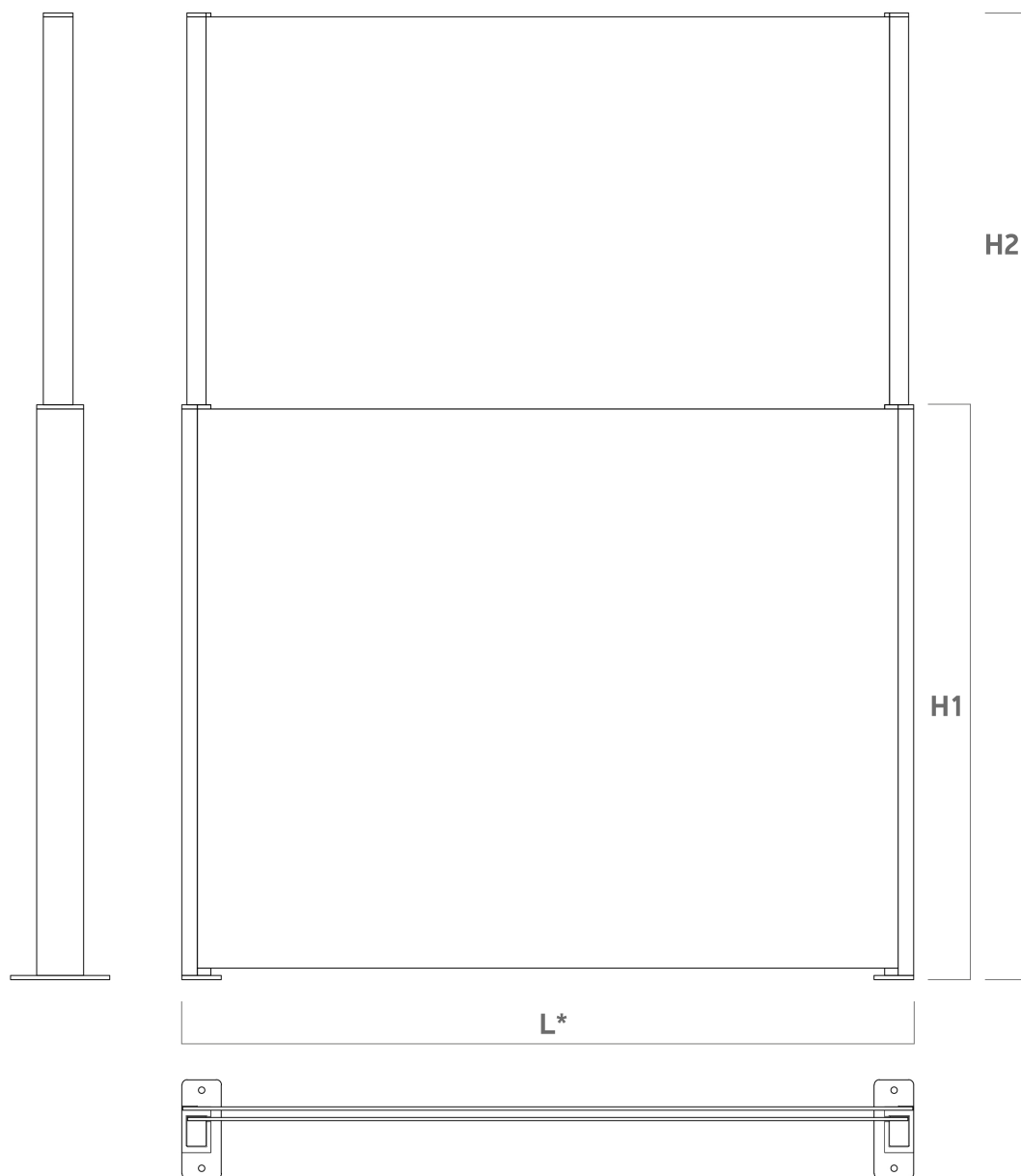


Heleva

Combinando una tecnologia innovativa con un design straordinario, Heleva è la soluzione ideale per eleganti spazi esterni come ristoranti, caffè, hotel, ecc.



Configurazione del sistema

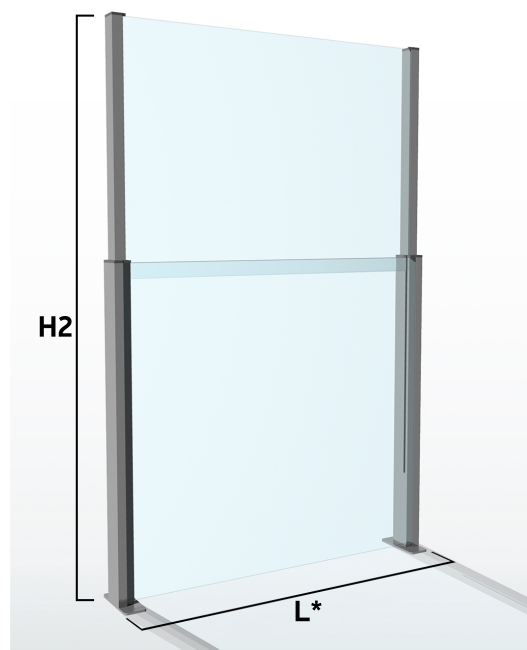
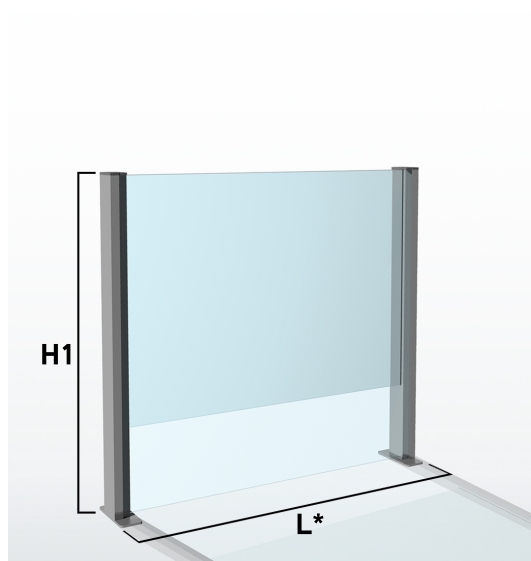


Un'installazione facile e veloce.

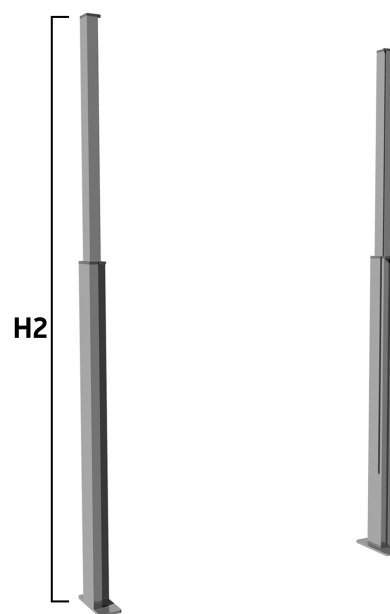
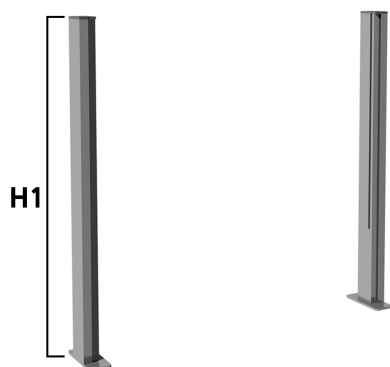
Con una sola pressione sulla parte mobile, il vetro viene sollevato nella posizione superiore.



Modulo



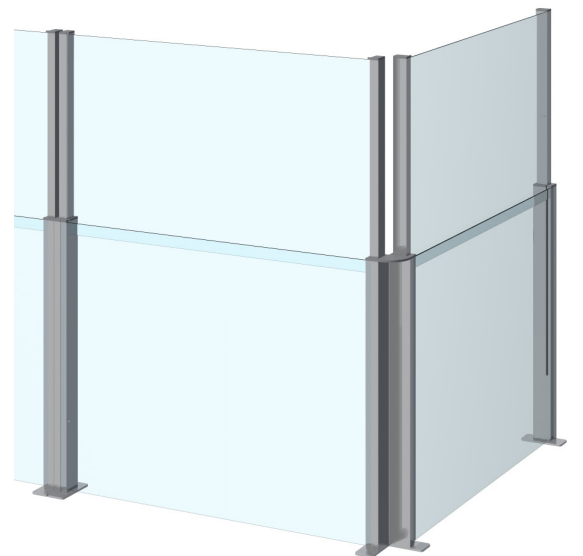
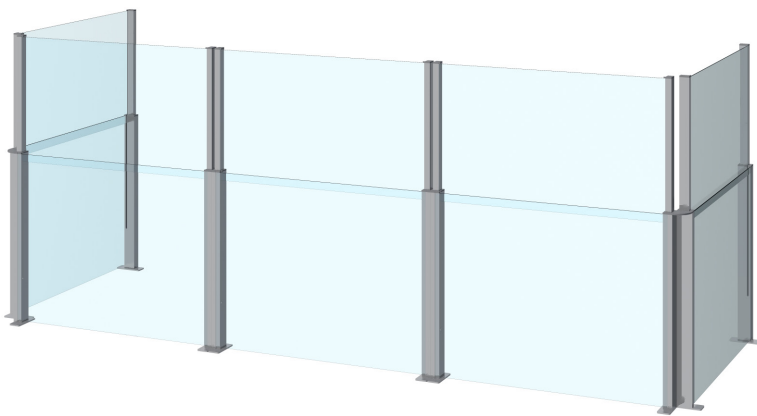
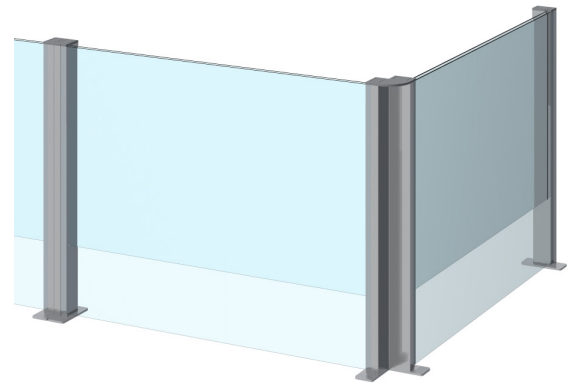
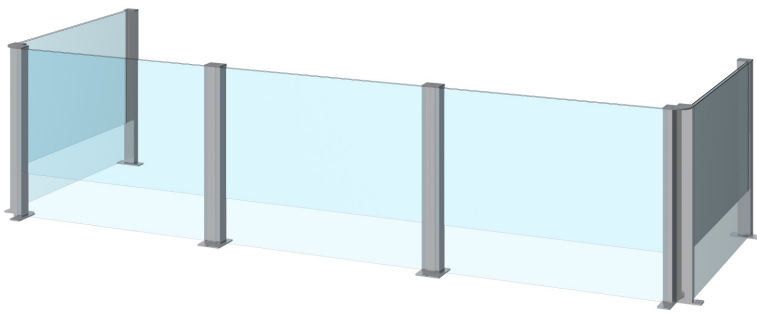
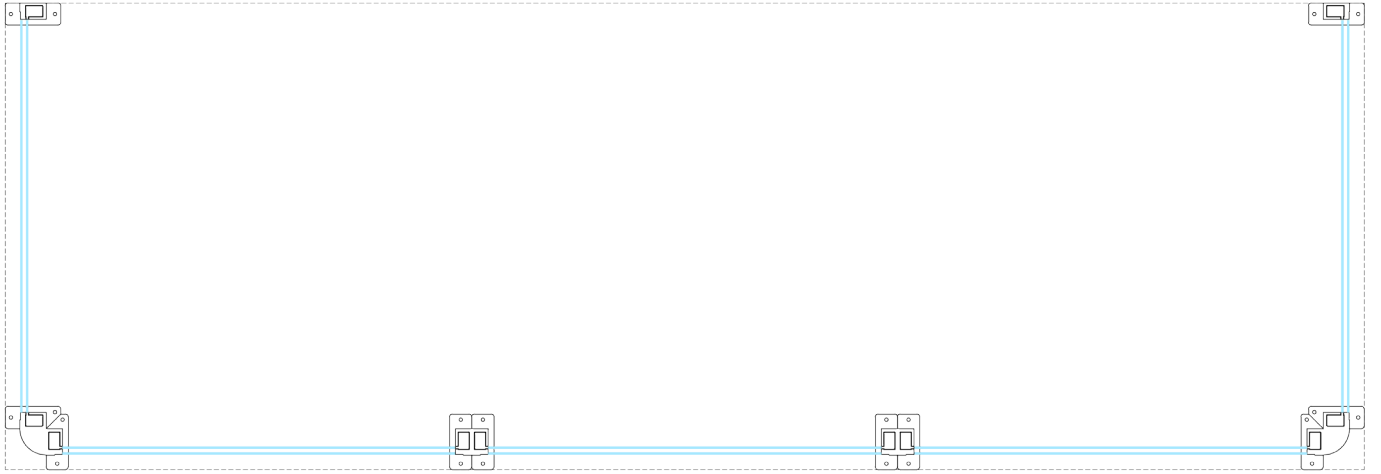
Coppia colonne modulo



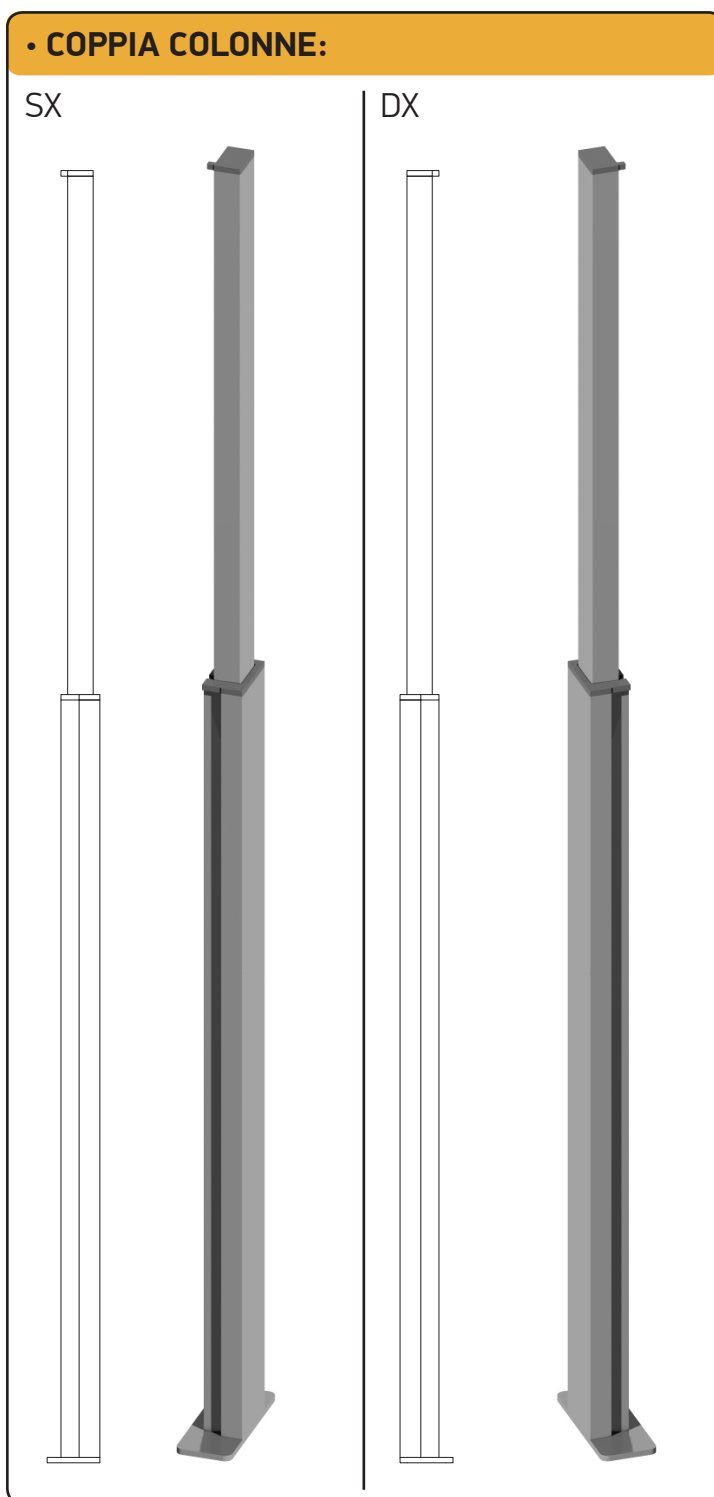
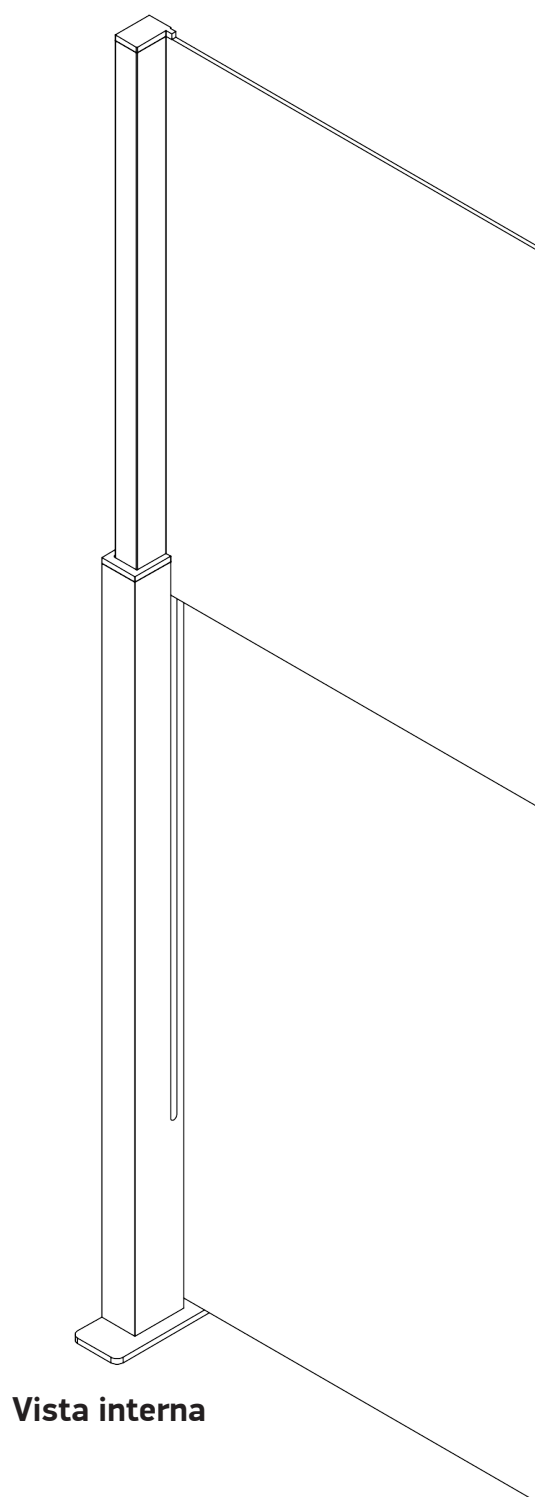
CARATTERISTICHE:

- **Larghezza:** L*: 1000 - 1450 mm
- **Altezza:** H1 (chiuso): 1100 mm
H2 (aperto): 1850 mm
- **Vetro fisso:** L = L* - 10 mm
H = 1070 mm
- **Vetro mobile:** L = L* - 30 mm
H = 800 mm
- **Tipi di vetro standard:** Temperato trasparente 6 mm
- **Colori standard:** Bianco 9010 opaco
Avorio 1013 opaco
Marrone 8017 opaco
Nero 9005 opaco
Grigio ferro
- *Per differenti tipologie di vetro e colore richiedere un preventivo*

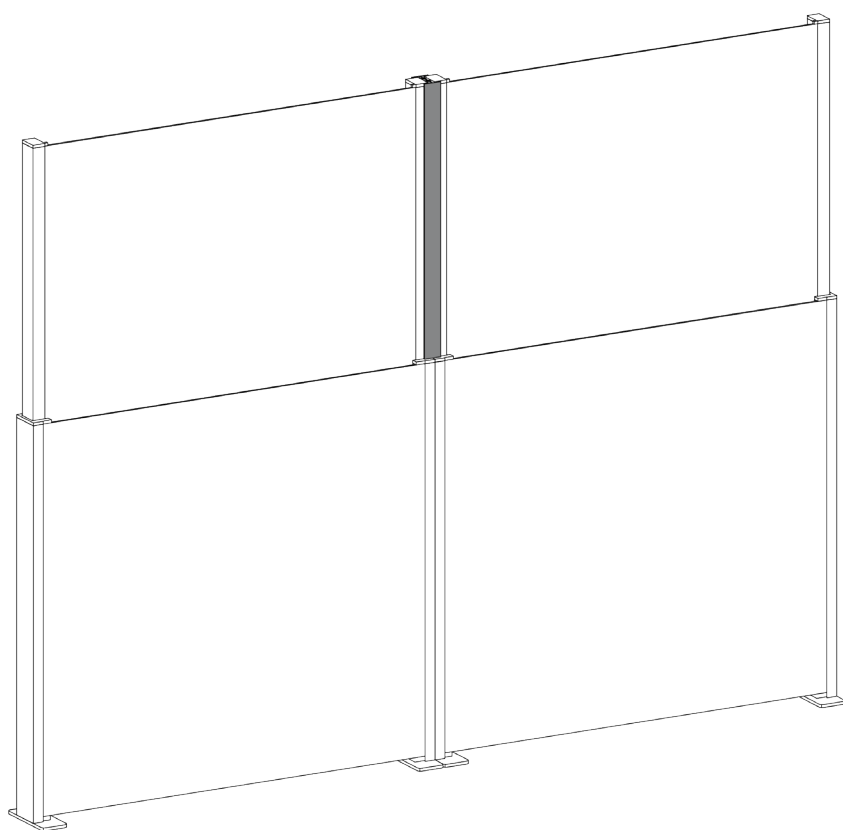
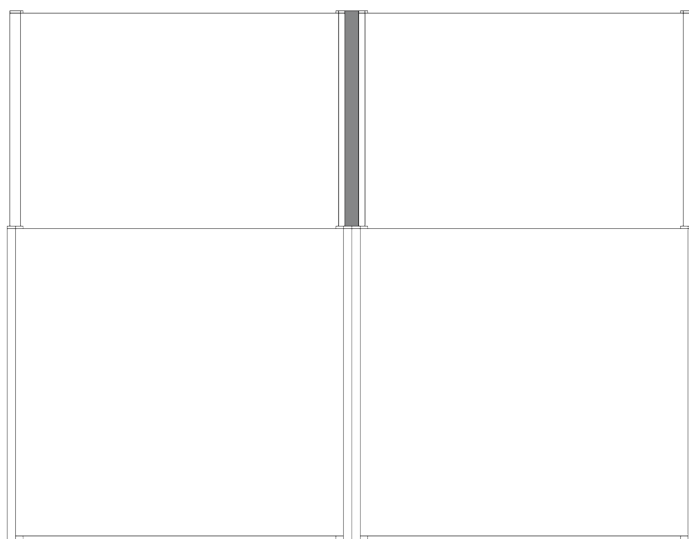
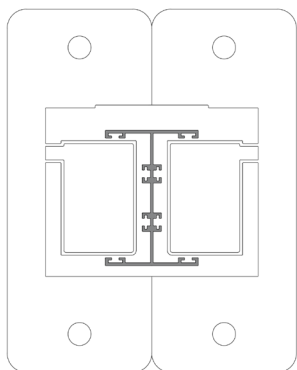
Esempio composizione moduli



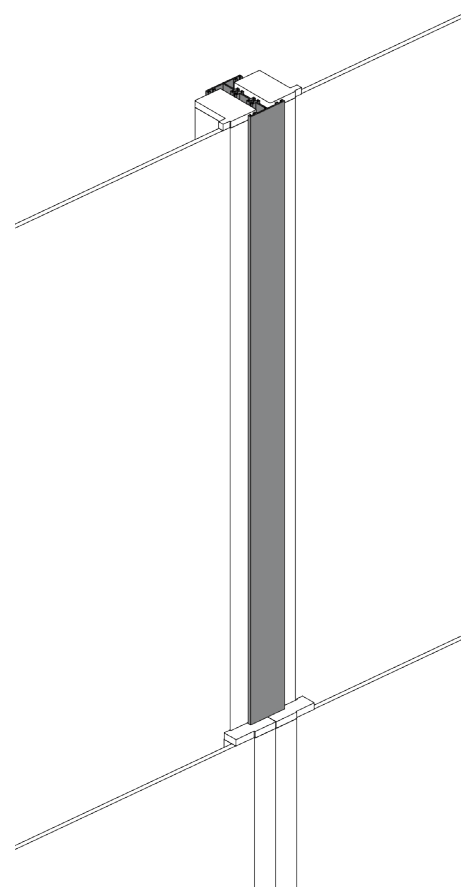
Composizione della colonna



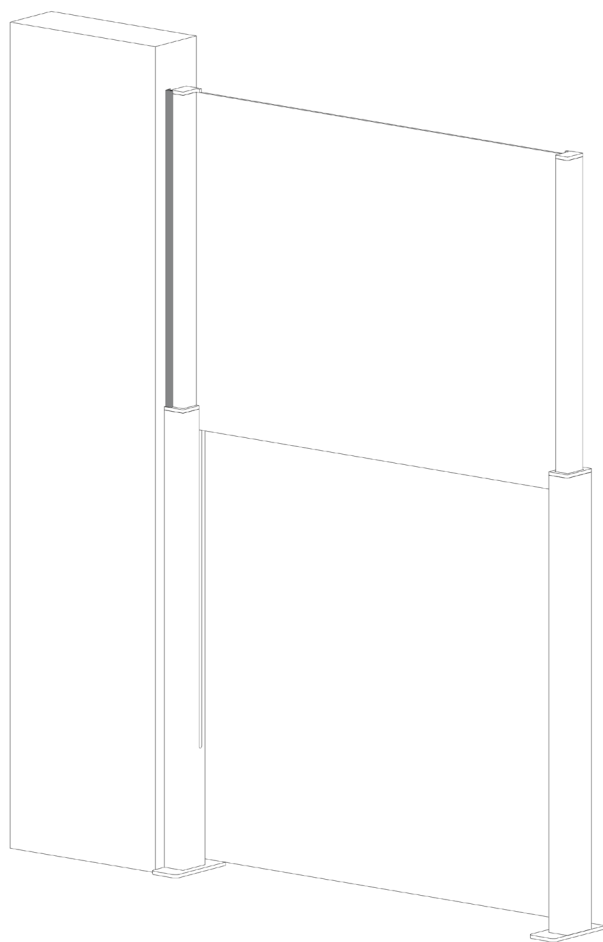
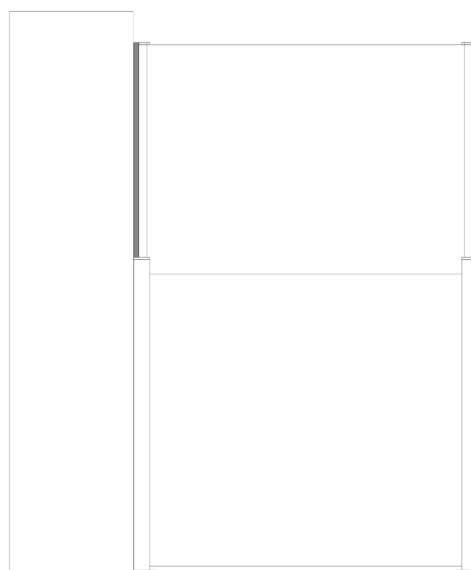
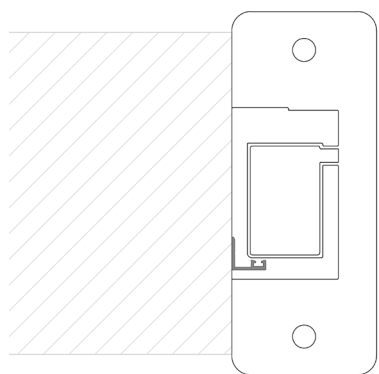
Profilo paraspifferi intermedio



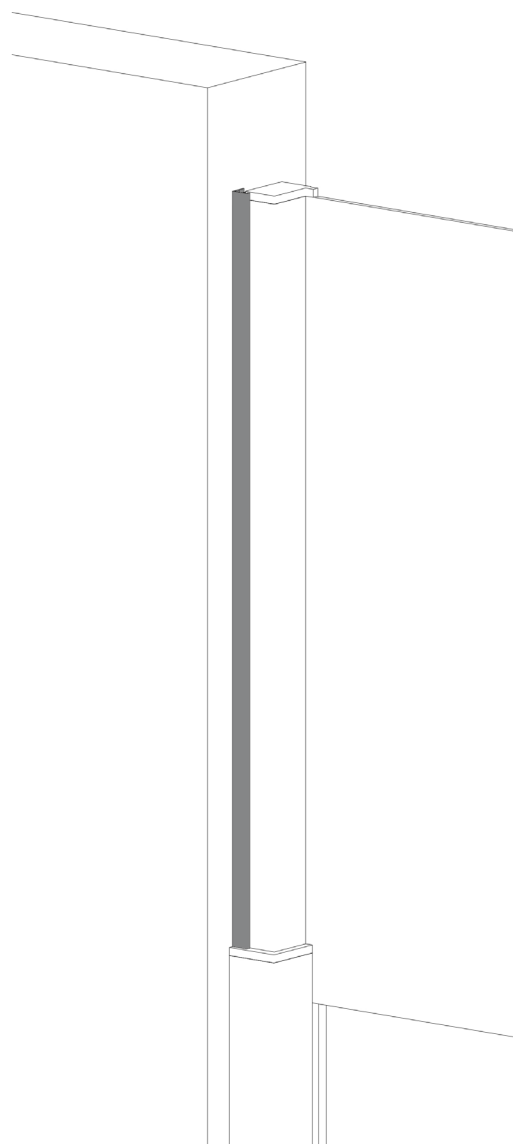
Vista esterna



Profilo paraspifferi terminale

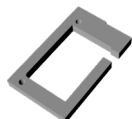
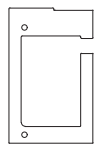


Vista interna

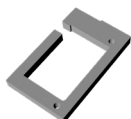
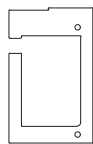


• KIT TERMINALE:

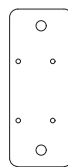
Tappo superiore SX



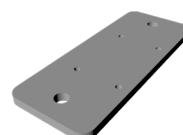
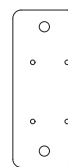
Tappo superiore DX



Piede SX

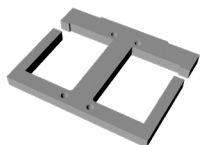
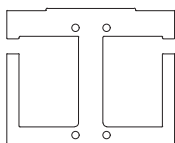


Piede DX

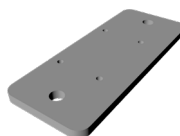
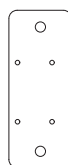


• KIT INTERMEDIO:

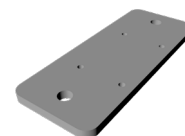
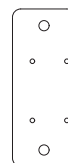
Tappo superiore doppio



Piede SX

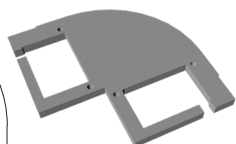
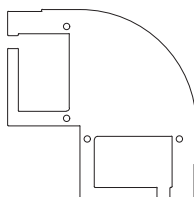


Piede DX

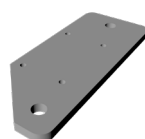
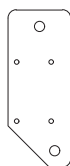


• KIT ANGOLARE:

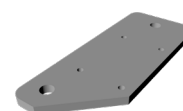
Tappo superiore angolare



Piede angolare SX



Piede angolare DX



Personalizzazione del sistema


Heleva offre la possibilità di scegliere tra una vasta gamma di colori e di realizzare vetri altamente personalizzati.

Le specchiature in vetro possono essere decorate con adesivi o serigrafie personalizzate.



Certificazione

Heleva è un prodotto certificato “CLASSE 6” di resistenza al carico di vento secondo la norma **UNI EN 1932:2013**



RAPPORTO DI PROVA N. 397186

Cliente
LAB SYSTEM di Giuseppe De Facentis & C. S.a.s.
Via Francia - Zona PIP - 76017 SAN FERDINANDO DI PUGLIA (BT) - Italia


Oggetto*
**parete frangivento denominata
"Heleva"**

Attività
**resistenza al carico di vento secondo il paragrafo 8.1
della norma UNI EN 1932:2013 con parametri di prova e
valutazione dei risultati secondo la norma
UNI EN 13659:2015**

Risultati
Classe 6

(*) secondo le dichiarazioni del cliente.

Bellaria-Igea Marina - Italia, 9 agosto 2022

L'Amministratore Delegato
(Dott. Arch. Sara Lorenza Giordano)

Fornito digitalmente da SARA LORENZA GIORDANO



Rivenditore Autorizzato

